

Realize your vision

# Digital Transformation

## How India and Korea Can Create Synergy

---

**Mahn Chey**  
Managing Director  
SAMSUNG SDS INDIA

---

# 'Digital India' Programme since 2015

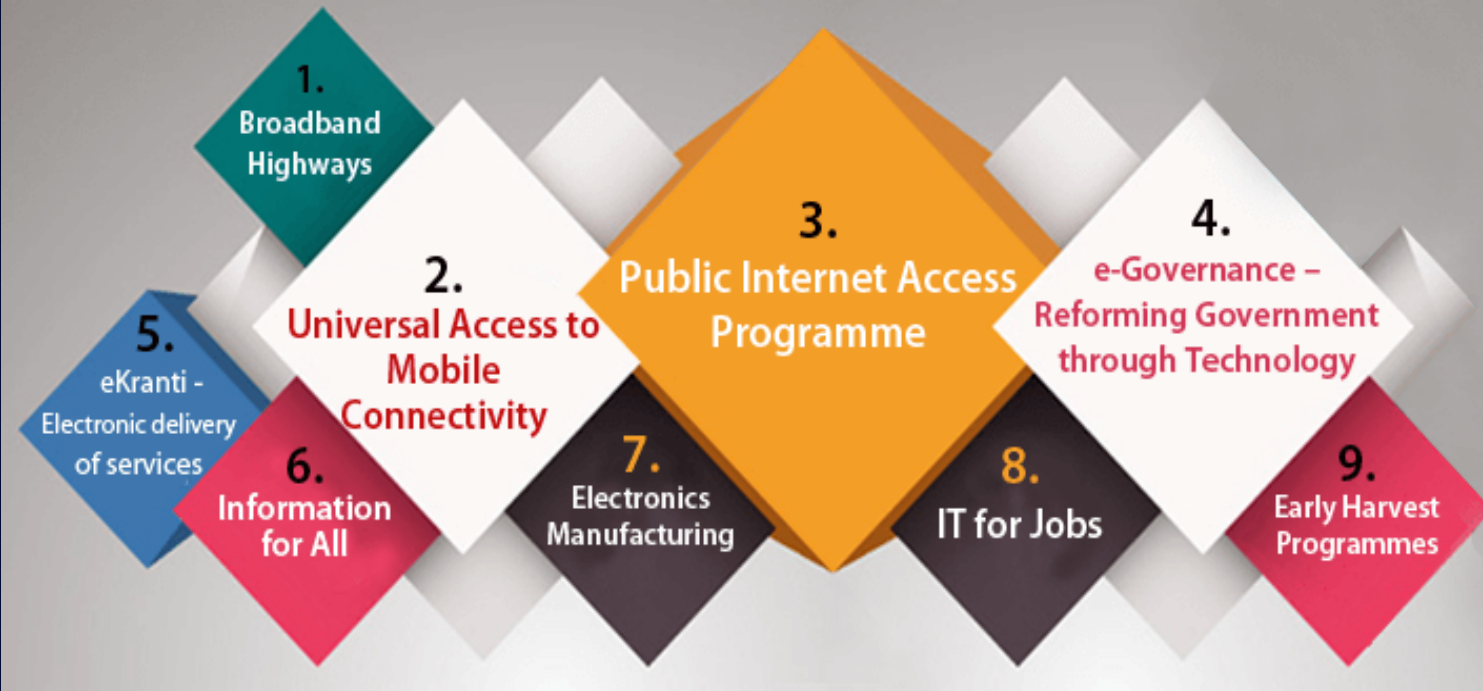
**Vision Areas**

**Digital Infrastructure as a Core Utility to Every Citizen**

**Governance and Services on Demand**

**Digital Empowerment of Citizens**

**9 Pillars of Digital India**



# High Digital Adoption in India

India  
No.1  
globally

1.26b

People enrolled in world's largest unique identity program



India  
No.2  
globally

19b

App  
downloads

1.06b

Wireless  
phone  
Subscribers

687m

Internet  
Subscribers

502m

Smartphone  
Devices

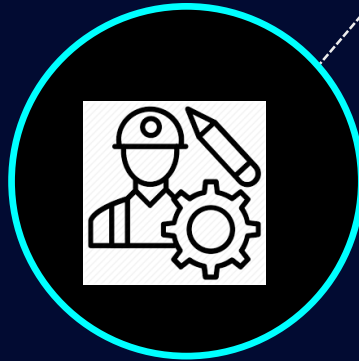
400m

Users  
engaged in  
social media

# Strong IT Expertise in India



**IT industry employs around  
4.36 million people in India**



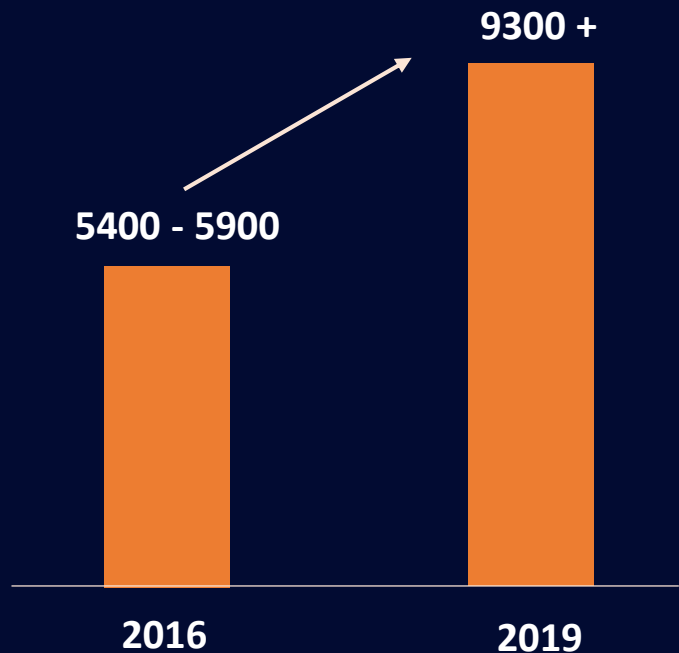
**1.5 million engineers graduate  
every year from 10,000+  
engineering colleges**



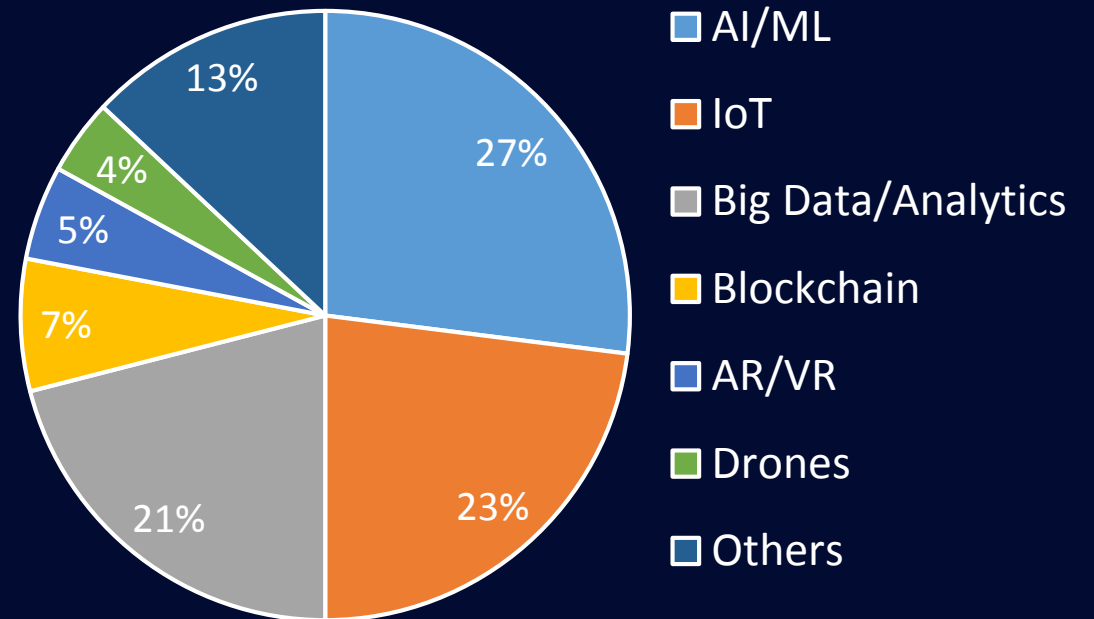
**0.3 million MBA graduates  
every year from 4000+  
MBA colleges**

# 3<sup>rd</sup> Largest Startup Eco-System in the World

**60% Plus Increase in # of Startups**



**1600+ Advanced Tech Startups in India**



# Synergy for Digital Transformation



- **High Digital Adoption**
- **Strong IT Expertise**
- **Large Eco-system of IT Startups**



- **Digital Transformation References**
- **Comprehensive IT Solutions across Industries**
- **Business Expansion in India Market**

# Digital Transformation Areas in India

## Smart Cities Mission

- 100 smart cities are being developed
- Investment of USD 292.88 billion



Public

## Large Retail Market

- Market expected to reach USD 1.1 trillion
- Top five retail market in the world with 1.3 billion people



Retail

## Growing Cargo Volume

- Market to reach USD 215 billion in 2020
- Wide spread with 4000 cities /towns & 6 lakh plus villages



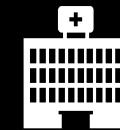
Logistics



Manufacturing

## 'Make in India' Initiative

- Contribution to GDP from 16% (2015) to 25% (2022)
- Creating 100 million job by 2022



Healthcare

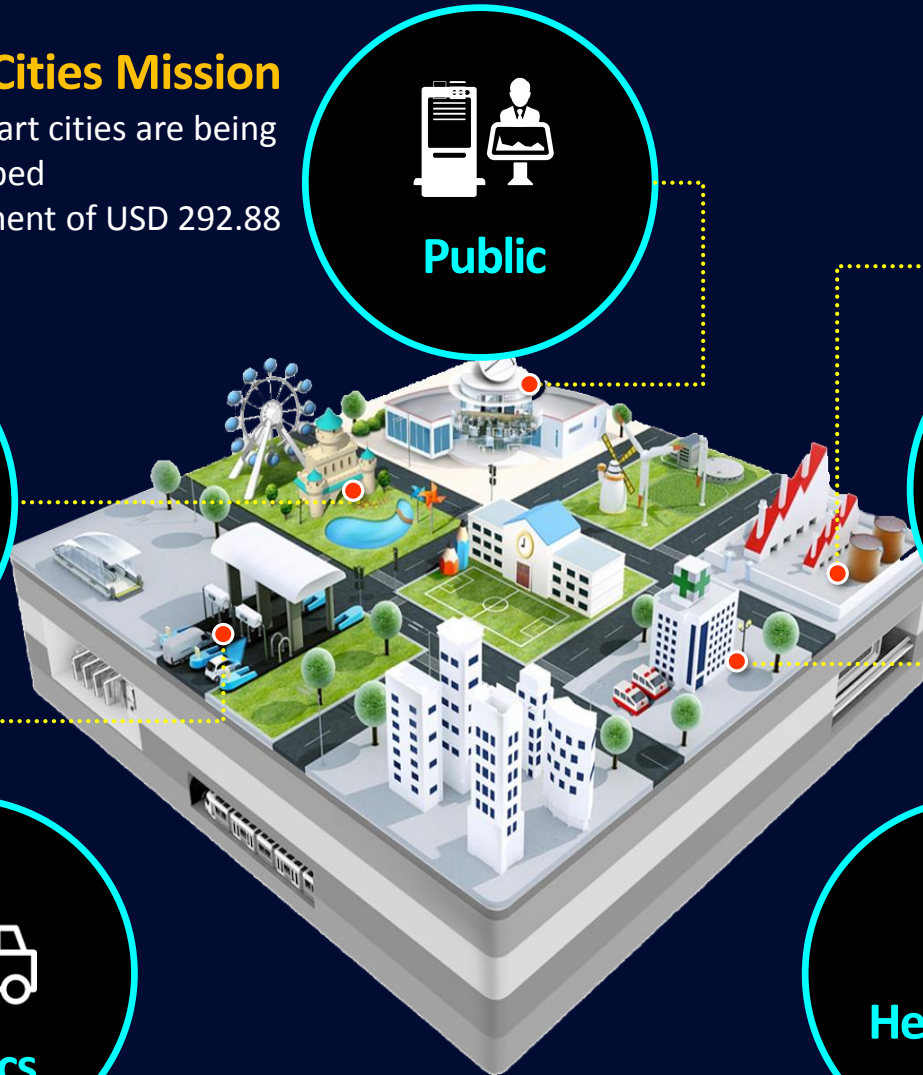
## Cardiovascular Disease

- No. 1 cause of death :~28% (2016)

## Ophthalmologic Disease

- Blindness : 8.8 million (2015)
- MSVI\* : 47.7 million (2015)

\*Moderate & Severe Visual Impairment

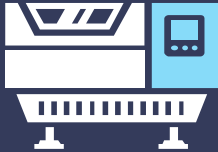


# Intelligent Factory : AI-based Manufacturing



Predictive maintenance

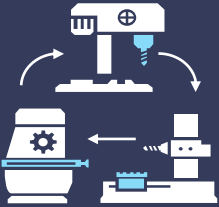
2.1PB collected/month



24 hours ~ 5 days early detection



AI-based process control



Process quality 30% ↑



AI-based defect analysis



AI Inspection Accuracy 85%



Real-time Inventory management



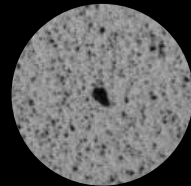
Load capacity 1.6x ↑  
Shipment leadtime 35% ↓

\* PB : Peta Byte

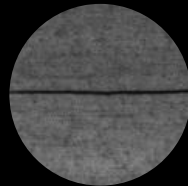


# Intelligent Factory : AI-based Defect Analysis

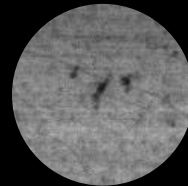
**Prediction** + **Decision Making** + **Feedback**



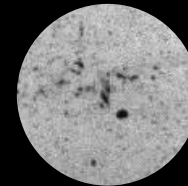
Passed 1



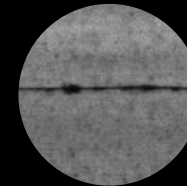
Passed 2



Passed 3



Defective A



Defective B



Defective C

# Digital Healthcare : Retina Fundus Diagnostics

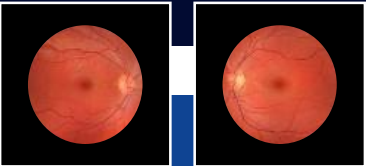
Eyelike Portable Camera



- ✓ Improve efficiency as getting preliminary result
- ✓ Get access anywhere remotely
- ✓ Detect the preventable blindness earlier



Capture Fundus Image



Upload Image to Cloud



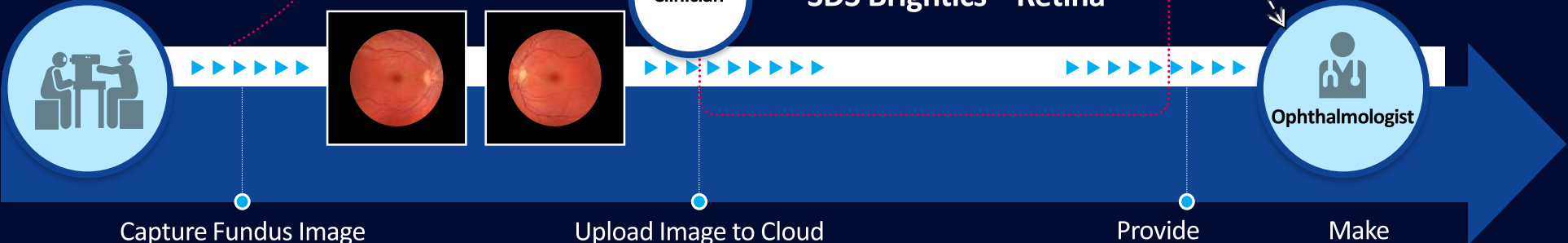
SDS Brightics™ Retina



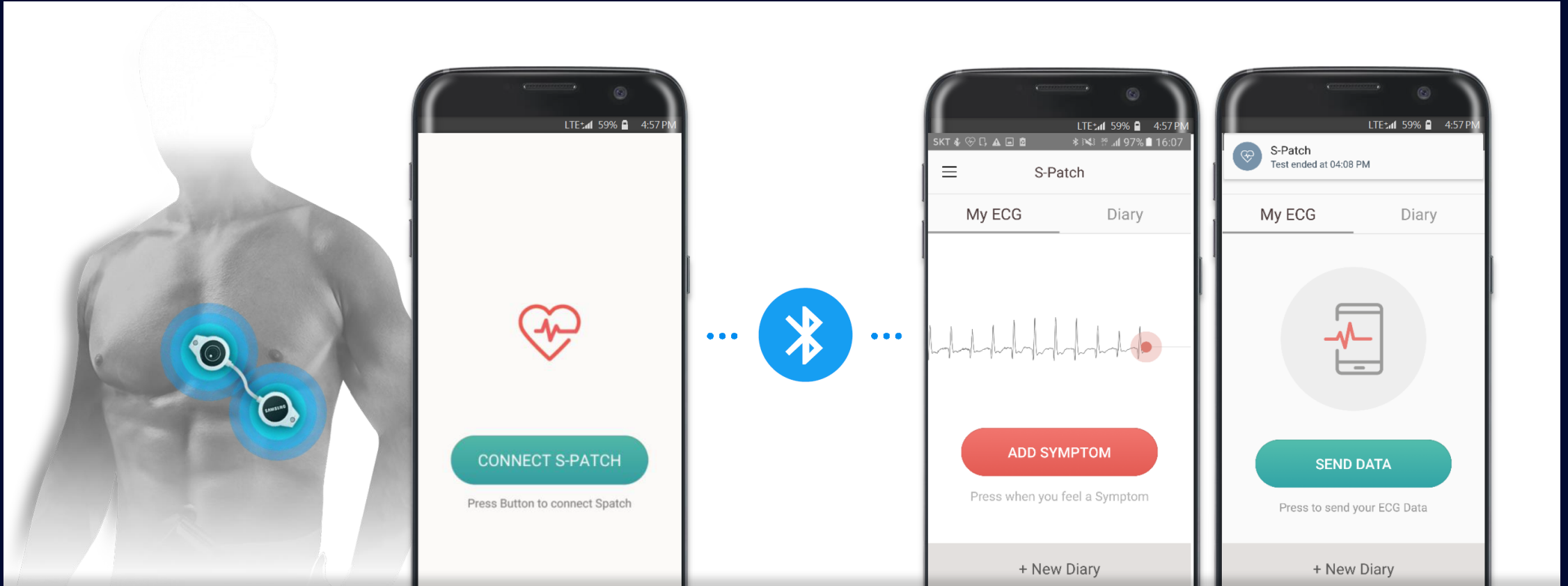
Provide the Preliminary Result



Make the Final Decision



# Digital Healthcare : ECG Monitoring



## Attach

Lightweight(8g),  
improved patient  
wearability

## Connect S-Patch to Application

Through Bluetooth,  
easy to connect device and send data  
(maximum 100hr)

## Symptom Log

One touch button for  
symptom / activity  
entry

## Send Data

One button to  
send data

# Digital Healthcare : ECG Monitoring



S-Patch



Symptom diary\*  
aligned with  
HR trend



Quick view of  
rhythm trend



Patient Mobile App

Provider Portal





IMMEDIATE + COMPLETE  
SUSTAINED REVERSAL

reversal, if it is ever needed\*

low dose

minimal effect

no contraindications

can be restarted 24 hours  
after discontinuation of Prasinda™

can offer your patients the  
assurance of reversibility

## S-Patch Cardio - ECG

# Smart Logistics : Innovative & Integrated Logistics Services

## Logistics Services



## Value Proposition



# Data Marketing: Behavior Sensing & Video Analytics



# Data Marketing: Centralized Content Management

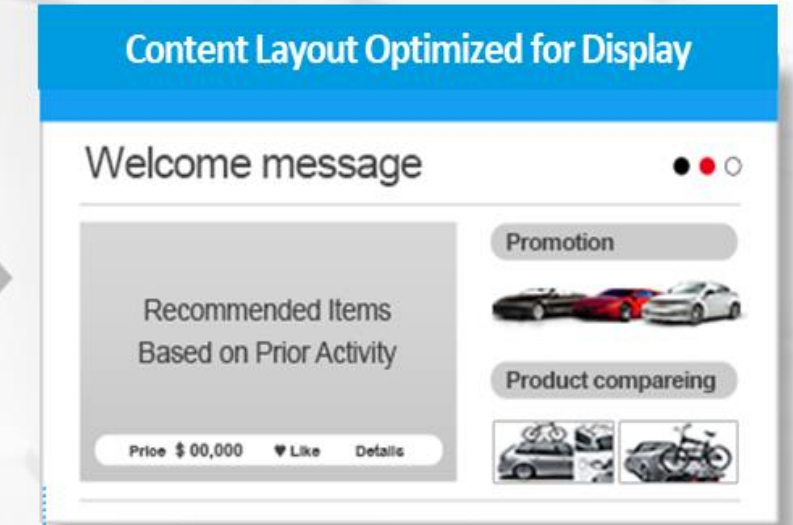


Content Manager

- Web-based content life cycle management
- Multi-device simultaneous distribution
- Content authoring tools (layout setup, authoring, and previewing)



Content distribution



- Content management in cloud environment
- Multiple contents type (e.g. image, video, HTML, PDF, PPTX, VR, etc.)
- Supporting device interface such as LFD, Tablet, etc.



Insert Video

# Smart City : Data-driven Services through Digital Transformation



## CLEANER

Through environmental sensors and facilities status **data**



## SAFER

Real time **data** can assist managing emergency and unusual events



## ECO-FRIENDLY

Managing and Reducing Energy consumption based on energy **data** analysis



## EFFICIENT

Improving Management efficiency through integrated **data** analysis



## INNOVATIVE

Providing a platform to open **data** up to the public, which stimulates creating ideas



## SEAMLESS

Providing real time **data** and timely services offer seamless user experience



## ATTRACTIVE

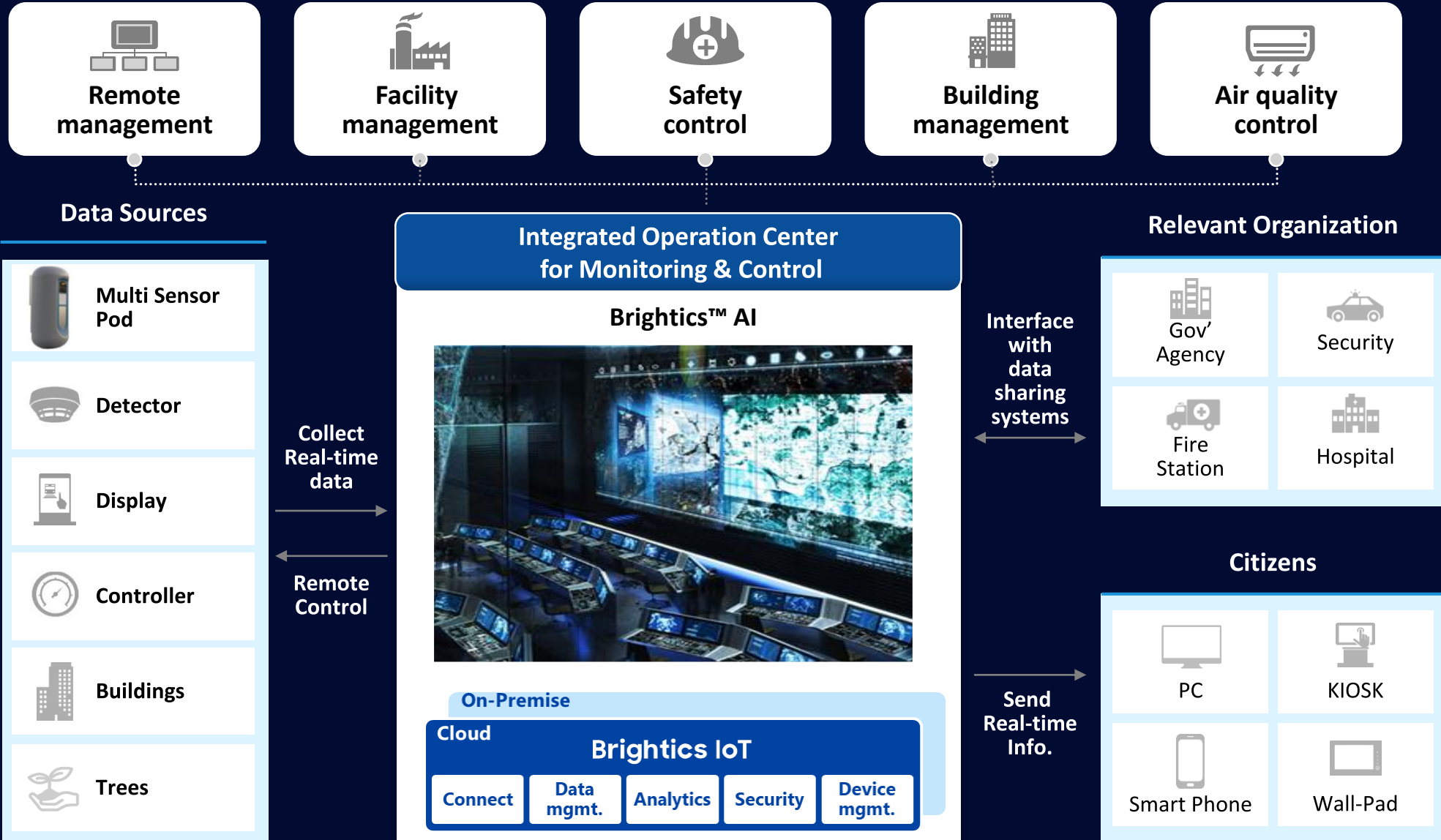
Making attractive place through **data-driven** digital transformation



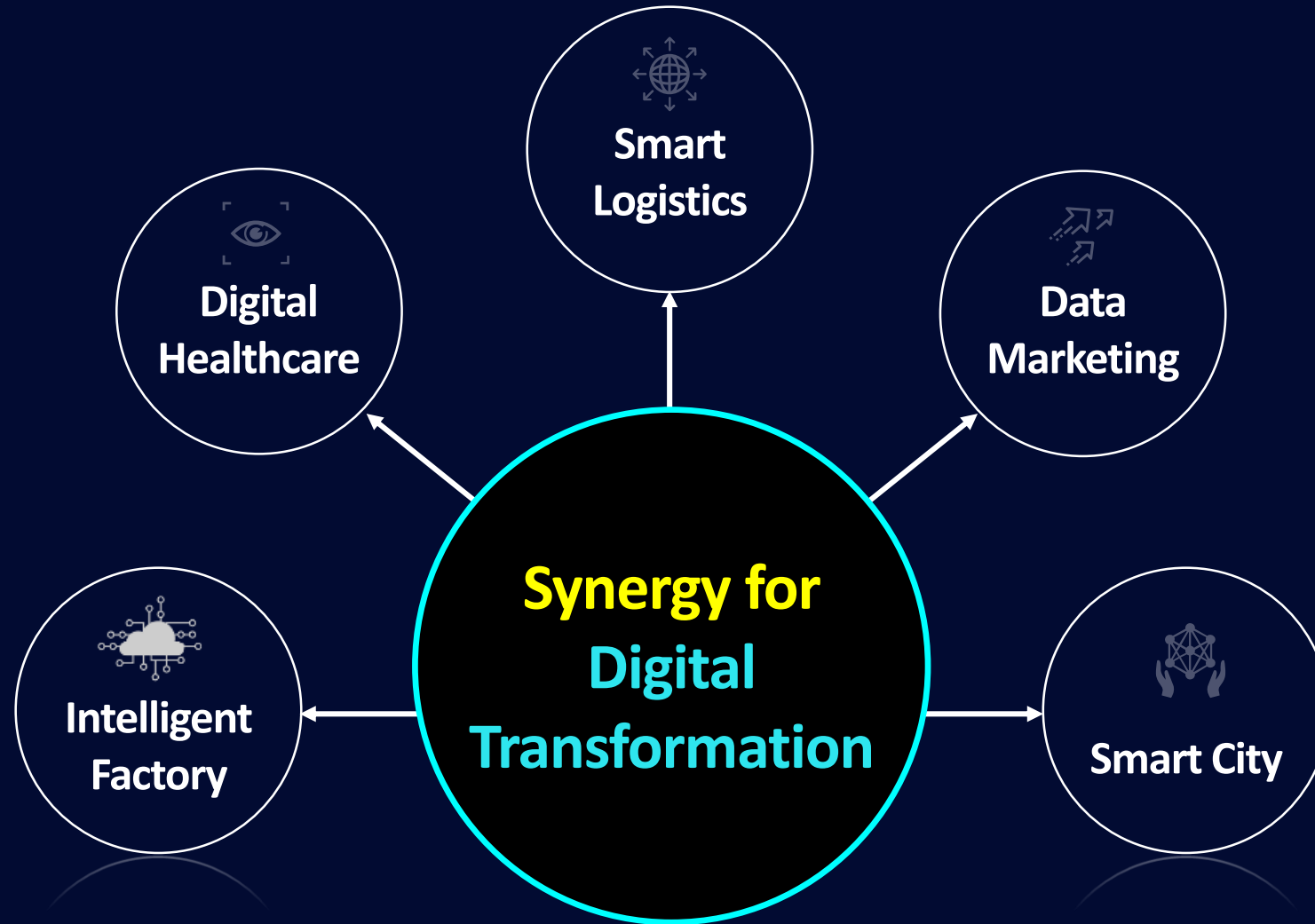
## INTERACTIVE

Better and more targeted services to customer through live **data** sharing

# Smart City : Integrated Monitoring & Control Center



# Synergy for Digital Transformation of India



Insert Video

Insert Video

धन्यवाद

감사합니다

**Email** *sales.sdsindia@samsung.com*

**Website** *www.samsungsds.com/india/en*

**SAMSUNG SDS**